

Technical Specification:

Display	3 Line/4 digit Seven Segment, 0.56", RED LED		
Size(mm)	96(H)X96(W)X50(D) mm		
Panel Cut out	92X92mm		
Voltage Input	30 To 300VAC P-N CATIII		
Current Input	0.1 Amp To 5 Amp AC direct or C.T Selectable up to 4000/5 ratio		
Power Supply	230VAC, 50Hz, Approx. 4VA		
Wiring System	3Ph-4W		
Protection Level	IP-65 (Front side) As per IS/IEC60529:2001		
Operating Temperature	0°C To 50°C	Relative Humidity	Up to 95% RH Non Condensing

Parameter Display	MEASUREMENT RANGE
Phase Neutral Voltage (PV)	20.0 – 300.0 V
Line Current (~A)	0 - 5A (direct without CT)
Line Voltage (Phase-to-Phase) (LV)	50 – 500 V
Active Power (kW) Total	0.000 – 9999 kW
Active Energy (kWh)	0.000 – 999999 kWh
Power Factor (PF) Average	0.20 – 1.00 PF
Apparent Power (kVA)	0.000 – 9999 kVA
Frequency (Freq)	45 - 65 Hz
Load Hour	HHHH:MM:SS
No-Load Hour	HHHH:MM:SS

SCROLL / HOLD MODE:

- To enter into "Hold mode", Press HOLD key, when required parameter is displayed on Display. During "Hold mode", LED will blink.
- Press HOLD key again to enter into "Scroll Mode".

CT Ratio Selection:

- Keep pressing HOLD key for 10 Seconds. Display-1 will show CTR. Display-2 will show current CT ratio.
- Now release the HOLD key and press HOLD or RST Key to change CT ratio.
- To store selected CT Ratio in non-volatile memory, release the key and wait for 10 Seconds. Instrument will automatically stores CT Ratio and starts operating normally.

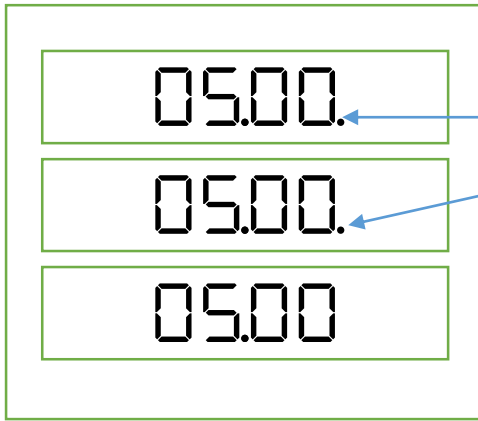
RESET KWH:

- Keep pressing RST key for 10 Seconds. Display-1 will show rESE. Display-2 will show Un It.
- Now release the RST key and press HOLD Key to reset kWh. Display-3 will show done.
- Release the key and wait for 10 Seconds. Instrument will starts operating normally.

RESET Load Hour & No Load Hour:

- Keep pressing RST key + Power on Instrument. Display-1 will show rESE. Display-2 will show hOUR.
- Now release the RST key and press HOLD Key to reset hour Display-3 will show done
- Release the key and wait for 10 Seconds. Instrument will starts operating nor

• **Reverse Phase Indication:**



Dot will be on if CT connection is Reverse

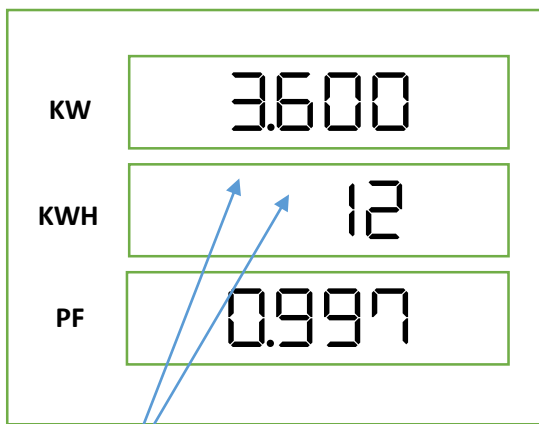
NOTE: If the dot (as shown in above diagram) of current display is ON, that means the CT connection (S1 & S2) is reverse therefore interchange the CT wires to show proper value of KW & KWh.

• **KWh READING:**

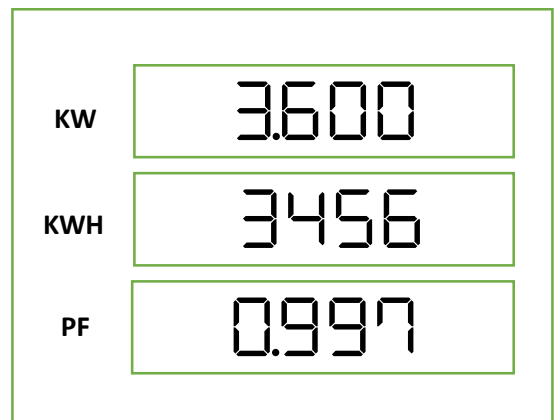
KWh is shown in middle display, Maximum value of KWh is 999999 (Six digits), as the number of digits is 4 higher value reading will be shown as follows.

- Value up to 4 digits (i.e. up to 9999) is shown in normal way.
- When this value is 5 or 6 digits, the display is split in two parts, 2D + 4D, which will be shown one after another in the middle display. (Both the parts will toggle at roughly 2 second interval.)

For example: if the value is 123456 KWh, then it will be shown as follows.



1st 2 digit are Blank

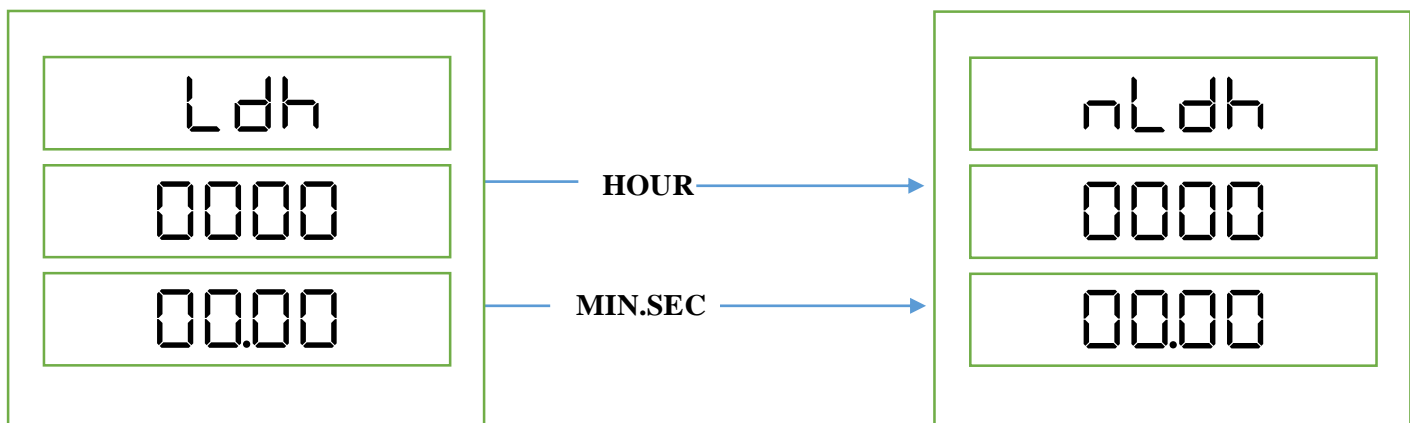


Total kWh=123456. Each part remains steady for 2 second approximately.

• **KVAR READING:**



• **LOAD HOUR & NO LOAD HOUR READING:**



CONNECTION DIAGRAM:

