

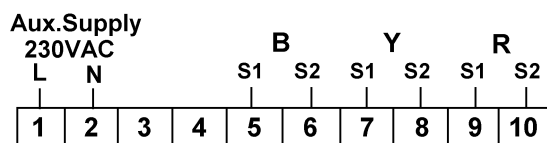
### Technical Specification:

Model	AMP-9611		
Size(HxWxD)	96 X 96 X 50 mm		
Panel Cut-out	92 X 92 mm		
Display	3 Digit/Line Seven Segment 0.56", red LED Display		
Input Current	Secondary : 0.5 to 5A AC Direct Primary : 5 to 5000 Amp Selectable		
Supply	230V AC,50 Hz, Approx. 4VA		
Protection Level	IP-65(Front side) AS per IS/IEC 60529:2001		
Operating Temperature	0°C To 55°C	Relative Humidity	Up to 95% RH Non Condensing

### Connection Diagram:

Range : Current:0.5 to 5A AC System: 3Ph-3W
---

### AMP-9611



### CT PRIMARY SELECTION:

- 1) Press CT Key.
- 2) Now without releasing the key switch on the instrument.
- 3) Select required CT primary with CT key.
- 4) Power Off instrument